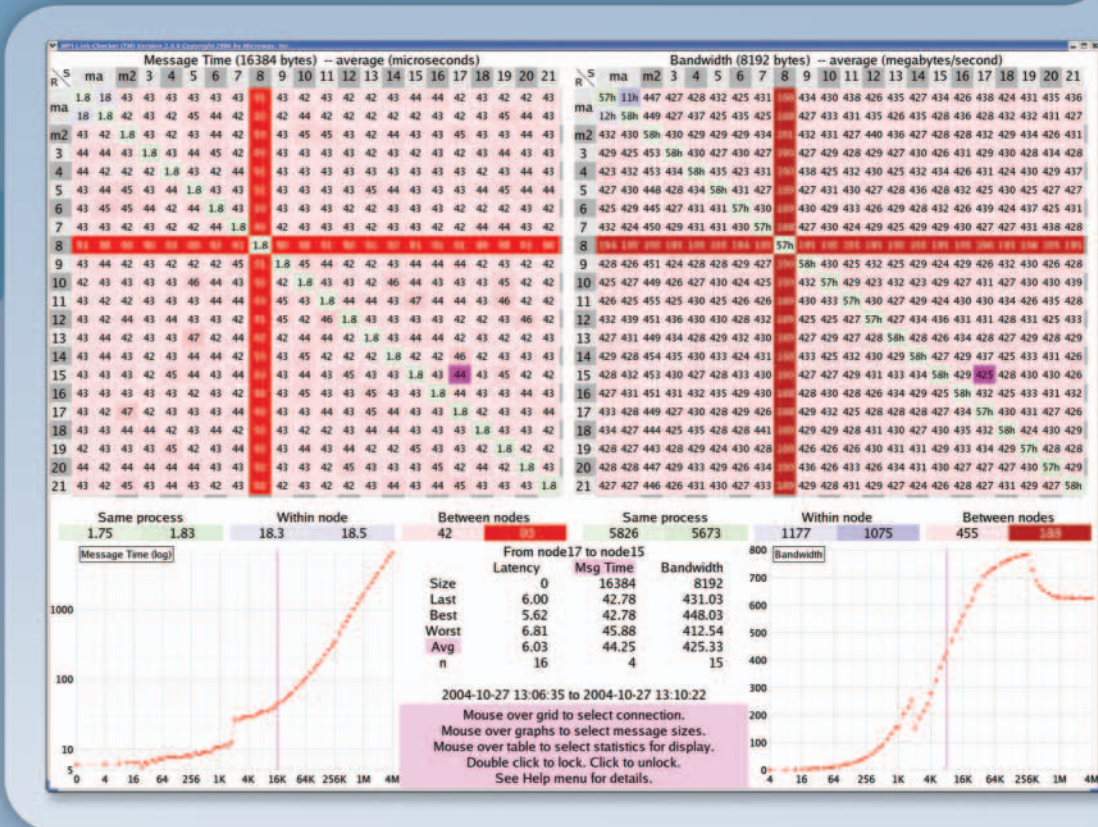


# X Marks the Slow Node!



▲ Microway® Quad Optron™ Cluster with 36 Optron 852s, redundant power and 45 hard drives in CoolRak™ cabinet.

## MPI Link-Checker™ to the Rescue!

A single slow node or intermittent link can cut the speed of MPI applications by half. Whether you use GigE, Myrinet, Quadrix, InfiniBand or InfiniPath HTX, there is only one choice for monitoring and debugging your cluster of SMP nodes:

### Microway's MPI Link-Checker™

Our unique diagnostic tool uses an end-to-end stress test to find problems with cables, processors, BIOS's, PCI buses, NIC's, switches, and even MPI itself! The newest release provides ancillary data on inter-process and intra-CPU latency which can vary by a factor of 10 between MPI versions. MPI Link-Checker is also useful for porting applications to new hardware. It provides instant details on how latency and bandwidth vary with packet size. It is available now for a free 30 day evaluation!

Wondering what's wrong with your cluster, or need help designing your next one? Call our HPC staff at 508-746-7341. Visit microway.com to learn about new low latency interconnects including the PathScale InfiniPath HTX Adapter, which delivers unmatched MPI latency of under 1.5 microseconds.

Microway has been an innovator in HPC since 1982. We have thousands of happy customers. Isn't it time you became one?

Call us first at 508-746-7341 for quotes and benchmarking services. Find technical information, testimonials, and newsletter at [www.microway.com](http://www.microway.com).

